

USB Serial Converter

User's Manual

Copyright Statement

No part of this publication may be reproduced in any form by any means without the prior written permission. Other trademarks or brand names mentioned herein are trademarks or registered trademarks of their respective companies.

Disclaimer

Information in this document is subject to change without notice. The manufacturer does not make any representations or warranties (implied or otherwise) regarding the accuracy and completeness of this document and shall in no event be liable for any loss of profit or any commercial damage, including but not limited to special, incidental, consequential, or other damage.

March 2007, Rev 5.0

Safety Instructions

Always read the safety instructions carefully

- Keep this User's Manual for future reference
- Keep this equipment away from humidity
- If any of the following situation arises, get the equipment checked by a service technician:
 - The equipment has been exposed to moisture.
 - The equipment has been dropped and damaged.
 - The equipment has obvious sign of breakage.
 - The equipment has not been working well or you cannot get it work according to User's Manual.

Table of Contents

| | |
|-------------------------------------------------|-----------|
| 1. Introduction | 1 |
| Features | 1 |
| Package Contents | 1 |
| System Requirements..... | 1 |
| 2. Installation | 2 |
| On Windows Vista | 2 |
| On Windows 98SE/ME/2000/XP..... | 4 |
| Verify the Driver Installation on Windows | 5 |
| On Mac OS X..... | 6 |
| Connecting Serial Device..... | 8 |
| 3. Specifications | 9 |
| 4. Regulatory Compliance | 10 |
| FCC Conditions | 10 |
| CE | 10 |

1. Introduction

How to find a lightest way to contact your PDA to the USB port on your PC? USB Serial Converter operates as a bridge between one USB port and standard RS-232 Serial port. You just easily hook the cable into PC or Hub's port, and it can connect any RS-232 devices, such as PDA, scanner, printer...etc.

Features

- Compliant with the USB 1.1 version specification
- Supports RS-232 serial Interface
- Supports 500 kbps data transfer rate
- USB suspend condition
- Plug & Play compatible
- USB host device drivers available
- Draws its power from USB connection – no extra power adapter required
- Supports Windows 98SE, ME, 2000, XP, Vista 32/64-bit and Mac10.x

Package Contents

Before installation, please check the items of the package.

- USB Serial Converter x1
- Driver CD x1
- Quick Installation Guide x1

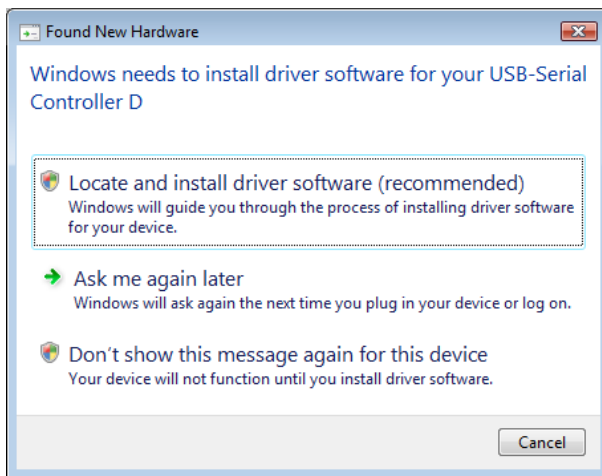
System Requirements

- IBM compatible computer or Mac
- Windows® 98SE, ME, 2000, XP, Vista 32/64-bit, Mac 10.x
- Available USB port
- 64 MB RAM or more.
- Pentium 233 MHz or higher

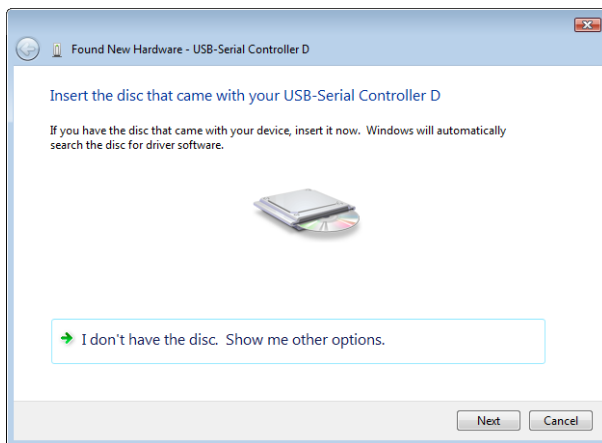
2. Installation

On Windows Vista

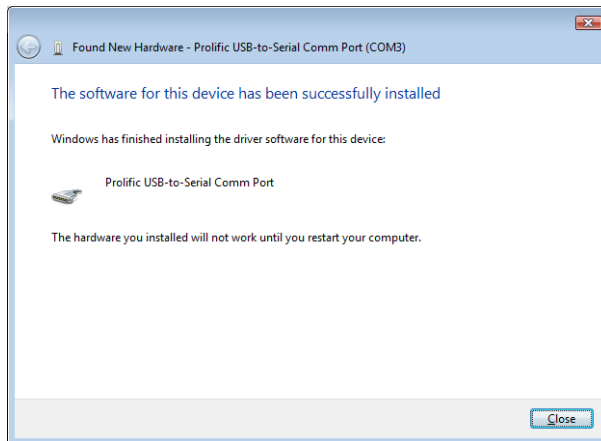
1. Connect the USB Serial Converter to the USB port on your computer.
2. When the **Found New Hardware** appears, select **Locate and install driver software (recommended)**.



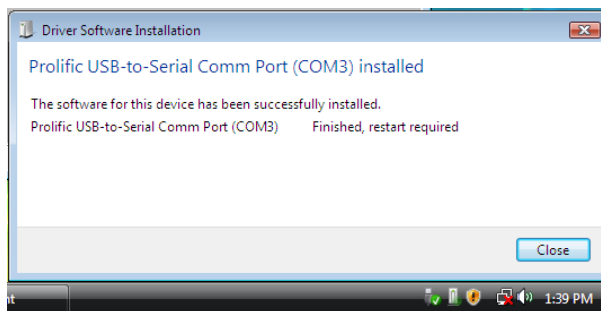
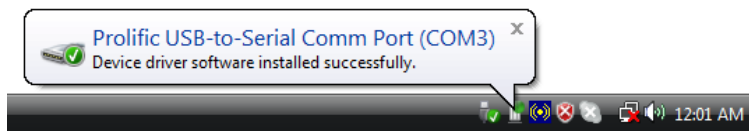
3. Insert the provided CD into your CD-ROM drive and click **Next**. (Sometimes the installer will automatically proceed to next step.)



4. When the installation is done, click **Close**.



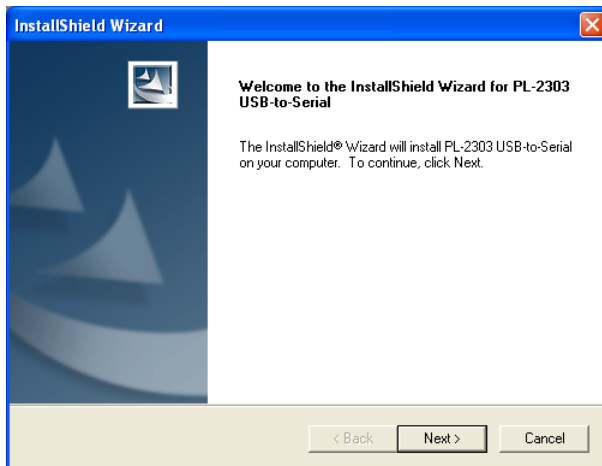
5. A pop-up message will appear in the notification area indicating the installation is complete. Restart your computer if prompted to do so.



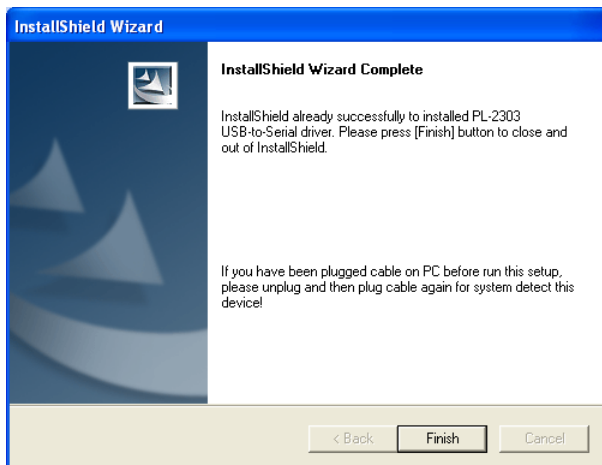
On Windows 98SE/ME/2000/XP

Note: DO NOT connect the USB Serial Converter to your computer before completing the driver installation.

1. Insert the provided CD into your CD-ROM drive. Run the **Setup** file under **x:\Driver\Win98_XP** where x: is your CD-ROM drive letter. When the welcome screen appears, click **Next**.



2. When the following screen appears, click **Finish**.



Once the installation is done, connect the converter to a free USB port on your computer.

Verify the Driver Installation on Windows

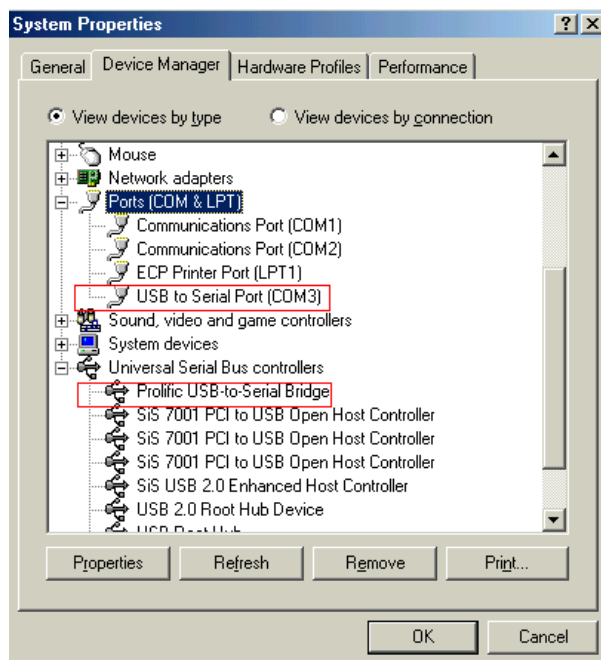
To verify your converter installation, please launch **Device Manager** by the steps below:

- On Windows 98SE/ME/2000/XP: Right-click the My Computer icon on the desktop and select **Properties > System > (Hardware) > Device Manager**.
- On Windows Vista: Right-click the **Computer** icon on the desktop and select **Properties > Device Manager**.

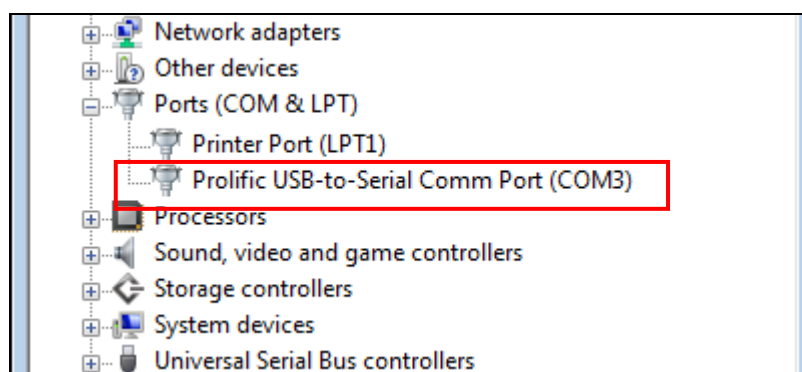
In the **Ports (COM & LPT)** group, a string similar to **USB to Serial Port** or **Prolific USB to Serial Comm Port** should be displayed.

If there is a question or exclamation mark next to that item, then the driver is not properly installed. Please delete the item and repeat the installation steps.

Windows 98SE/ME



Windows 2000/XP/Vista



On Mac OS X

The provided Mac X driver supports:

- Mac OS 10.1 and above for PowerPC based Mac
- Mac OS 10.4 and above for Intel based Mac

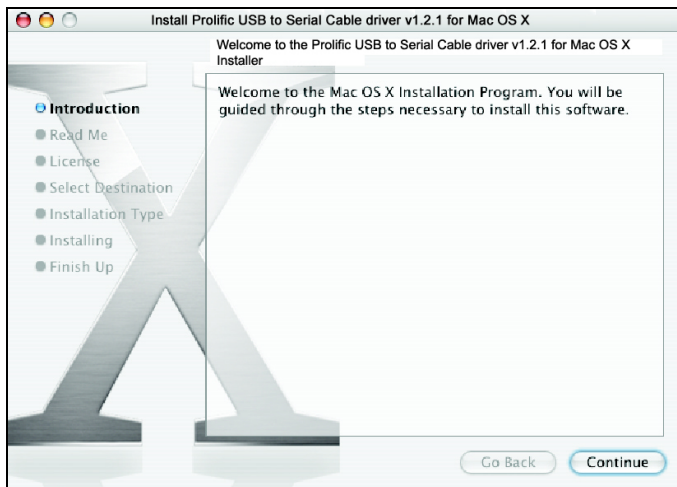
To install the drivers:

1. Insert the provided driver CD into your CD-ROM drive. Double-click the CD icon on the desktop and navigate to the directory of `\Driver\MacX`. Copy and then paste the **PL2303_1.2.1r2.dmg** file to the desktop.
2. Double-click the dmg file on the desktop to extract the file. Then double-click the **PL2303_1.2.1** file that is extracted.

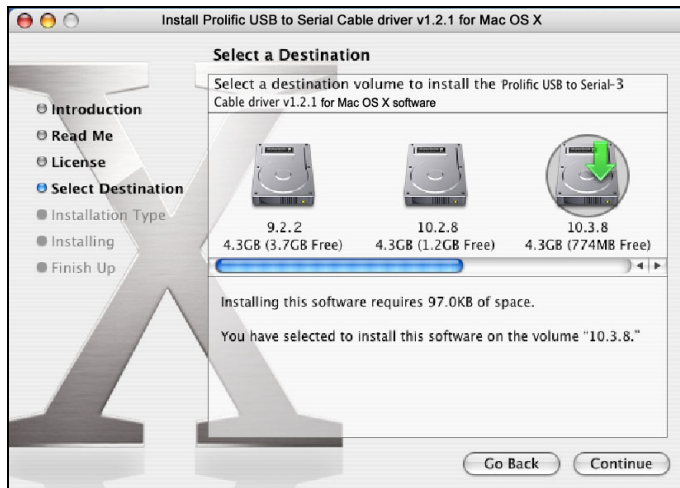


PL2303_1.2.1

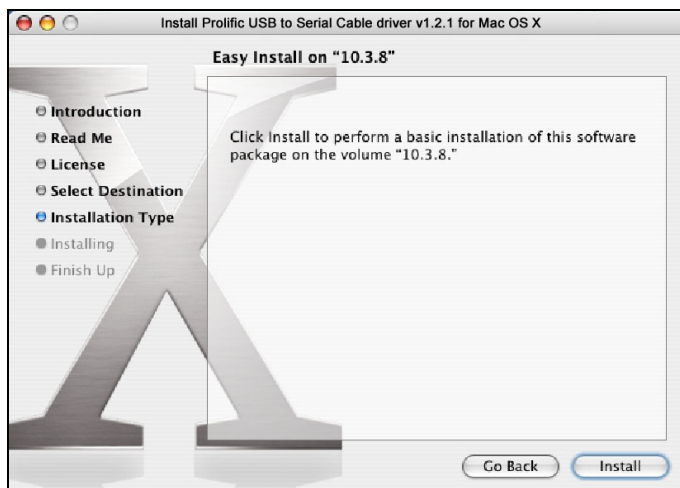
3. When the welcome screen appears, click **Continue**.



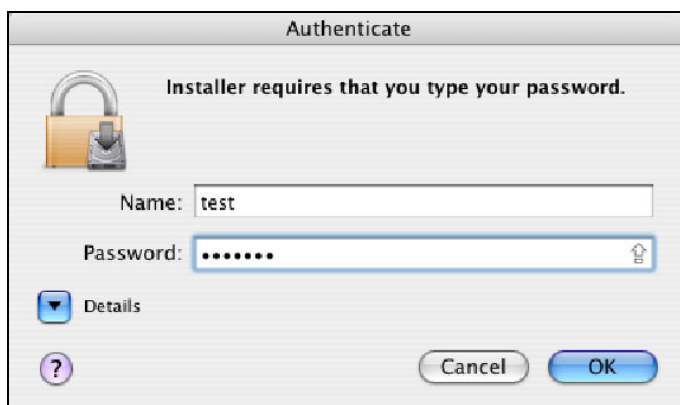
4. Select a destination disk to install the driver and click **Continue**.



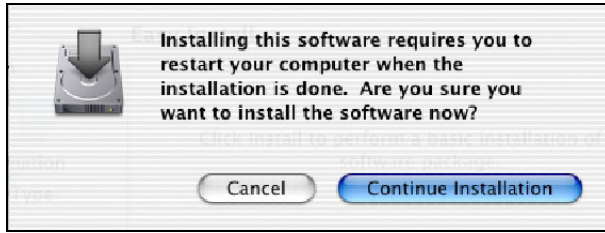
5. Click **Install**.



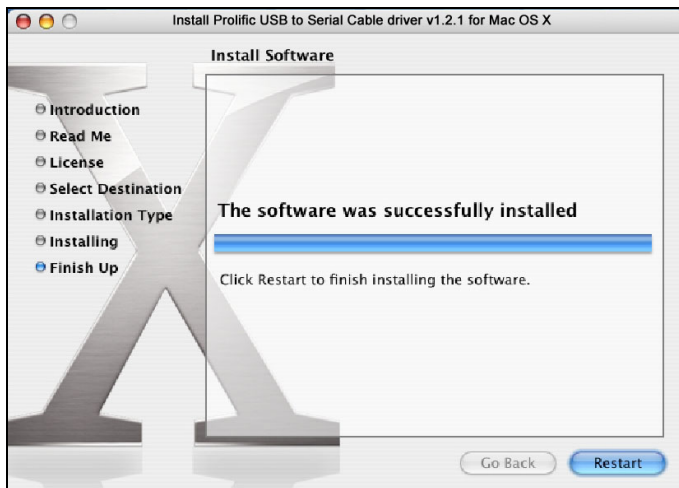
6. When the **Authenticate** screen appears, enter your password in the provided field and click **OK**.



7. Click **Continue Installation**.



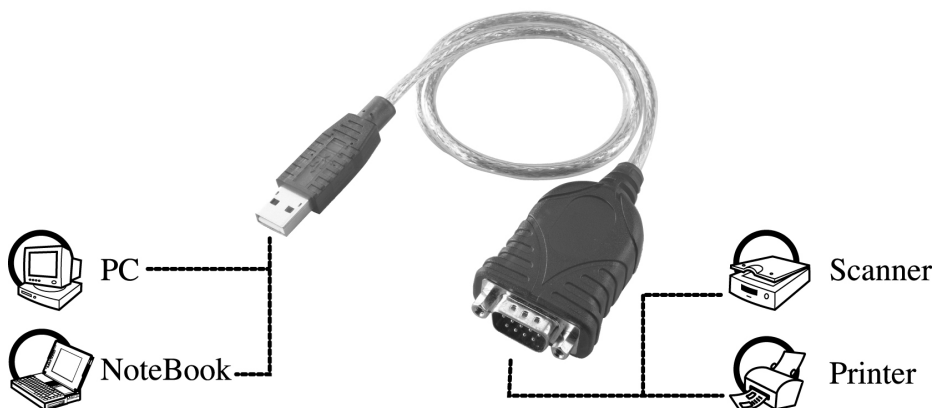
8. Click **Restart** to finish installing the driver and reboot your Mac.



9. Connect the converter to a free USB port on your Mac.
10. To verify the installation: Go to **Apple System Profiler > Extensions** and you should find **ProlificUsbSerial** among the list. This means the installation is successfully done.

Connecting Serial Device

Now you can connect your RS-232 device to the converter. If prompted to install the driver for your serial device, follow the manual that comes with your serial device to complete the installation.



3. Specifications

| | |
|--------------------------|---------------------------------------------------------------------------------------------------|
| Data Transfer Rate | 500 kbps |
| Function | USB1.1 Serial Converter operates as a bridge between one USB port and standard RS-232 serial port |
| Ports | USB 1.1, USB Type A male |
| Power | Bus-powered |
| Operating System Support | Windows 98SE, ME, 2000, XP, Vista 32/64-bit Mac 10.x |
| Accessories | Driver CD, Quick Installation Guide |

* Specification is subject to change without further notice.

4. Regulatory Compliance

FCC Conditions

This equipment has been tested and found to comply with Part 15 of the FCC Rules. Operation is subject to the following two conditions:

- (1) This device may not cause harmful interference
- (2) This device must accept any interference received. Including interference that may cause undesired operation.

CE

This equipment is in compliance with the requirements of the following regulations:
EN 55 022: CLASS B

